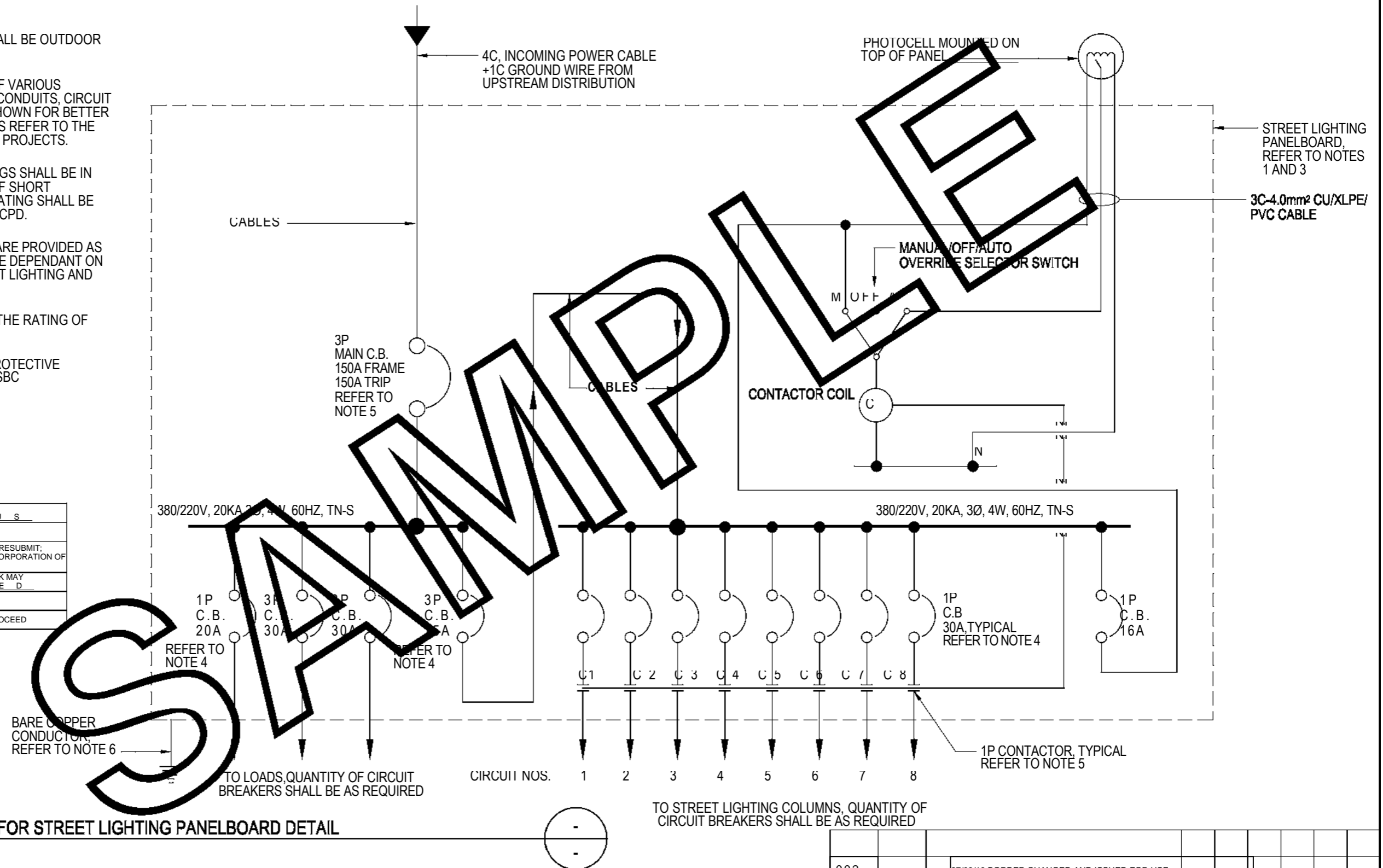
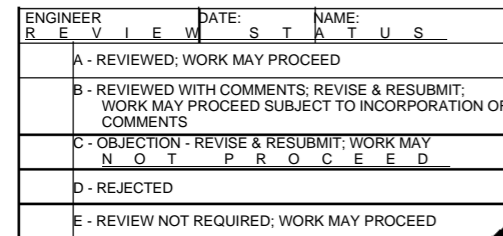


1. STREET LIGHTING PANEL BOARD SHALL BE OUTDOOR IEC IP65 ENCLOSURE.
2. TYPICAL SIZES, NOS. AND RATINGS OF VARIOUS EQUIPMENT SUCH AS PANELBOARD, CONDUITS, CIRCUIT BREAKERS, CONTACTOR, ETC ARE SHOWN FOR BETTER UNDERSTANDING FOR EXACT DETAILS REFER TO THE CONTRACT DRAWINGS FOR SPECIFIC PROJECTS.
3. PANELBOARD SHORT CIRCUIT RATINGS SHALL BE IN ACCORDANCE WITH THE RESULTS OF SHORT CIRCUIT CALCULATIONS. MINIMUM RATING SHALL BE 20KA FOR BRACING AND 14KA FOR OCPD.
4. CIRCUIT BREAKER SIZES INDICATED ARE PROVIDED AS AN EXAMPLE. EXACT RATINGS WILL BE DEPENDANT ON CALCULATED LOADS FOR THE STREET LIGHTING AND OTHER LOADS SUPPLIED.
5. CONTACTOR RATING SHALL MATCH THE RATING OF THE UPSTREAM CIRCUIT BREAKER.
6. THE CROSS SECTIONAL AREAS OF PROTECTIVE CONDUCTORS SHALL COMPLY WITH SBC



1. THIS DRAWING IS ISSUED ONLY AS A SAMPLE FOR STANDARD DRAWINGS.
2. ENTITY SHALL IDENTIFY AND DEVELOP STANDARD DRAWINGS FOR USE ON ITS PROJECTS.
3. GENERAL NOTES ON STANDARD DRAWINGS TO CONTAIN, AS A MINIMUM, REFERENCE TO RELEVANT KEY DESIGN REQUIREMENTS (e.g. SPECIFICATION, MATERIAL, CODES, ETC.)
4. WHEREVER APPROPRIATE MATERIAL TAKE OFF (MTO) IN A TABLE FORMAT TO BE PROVIDED IN THE DRAWING WITH DETAILS OF EACH COMPONENT (e.g. BOLTS, SUPPORT, STEEL SECTION, FLANGE, GLAND, ETC.)
5. REFERENCE TO GENERAL NOTES, LEGENDS, ABBREVIATIONS, SECTION DETAILS, ETC., AS APPROPRIATE, TO BE PROVIDED ON STANDARD DRAWINGS.
6. STANDARD DRAWINGS SHALL UNDERGO CHECKING APPROVAL PROCESS.

002		27/03/19 BORDER CHANGED AND ISSUED FOR USE							
000		06/11/17 ISSUED FOR USE							
REV. No	DATE	REASON FOR ISSUE	رسم	DRAWN	صمم	DESIGNED	تصميم	CHECKED	رسم
			REVIEWED	رسم	SUBMITTED	رسم	رسم	رسم	رسم
DRAWING STATUS									
ISSUED FOR USE									
PROJECT REFERENCE -									
FACILITY No. X X X									
CONTRACT No. X									
SCALE		DRAWING No.						REV	
NTS		EPM-KEE-05-000001						002	